

2019-20 SEASON SUBSCRIPTIONS

Five great performances!

Season Tickets:

Adult - \$75.00

Student (under 21) - \$25.00

Family - \$155.00

(families with children under 21 living at home)

Concert Times: Sundays, 2:00 p.m. and 6:30 p.m.
Season ticket is for all five performances in only one time slot - either the 2:00 p.m. or the 6:30 p.m. slot

All concerts held in Redmond at the Performing Arts Theater at Ridgeview High School
4555 SW Elkhorn Ave. (at Canal Blvd).

Doors open 45 minutes prior to concert

Dates and programs subject to change

Encore Program

As an all-volunteer, nonprofit organization, RCCA relies on the generosity of our patrons whose donations enable us to offer our **Artist Outreach Program** in Redmond schools and **Music Scholarships** for our youth as well as offering affordable subscription prices to the community. We appreciate all our donors and hope you will consider joining as a patron at one of the following levels:

Grand Patron - \$1,000

Patron - \$500

Sponsor - \$250

Contributor - \$150

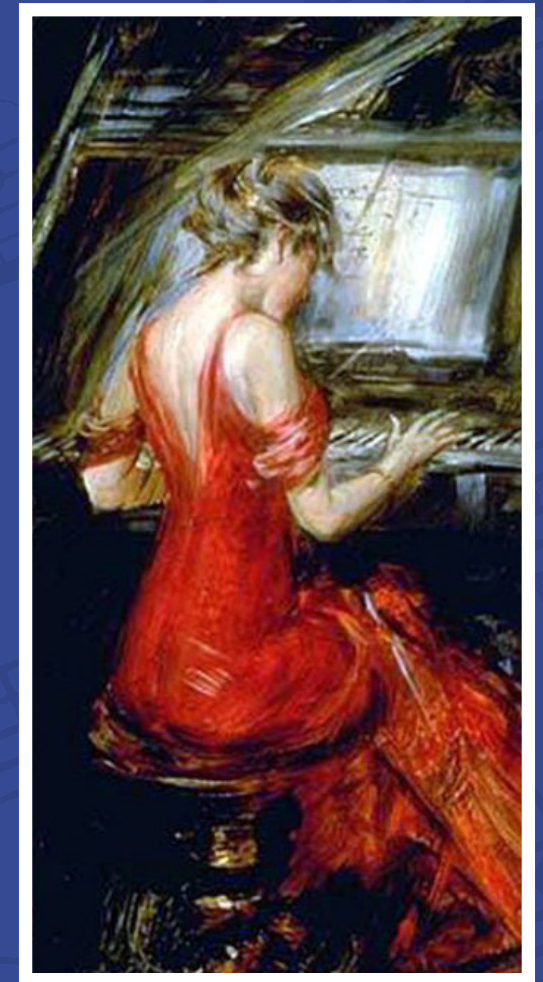
Friend - \$50

Thank you!



*Redmond
Community Concert
Association*

2019-20 Season



PO Box 91, Redmond, OR 97756

redmondcca.org

redmondcca@hotmail.com

541-350-7222



**October 20, 2019
Dallas String Quartet**



DSQ Electric - an international music sensation. A fusion of classical and contemporary music on both traditional and electric strings. With the 2016 release of their fourth album "DSQ" they continue to expand their passionate following on Pandora, Spotify, and Sirius XM radio. DSQ will perform accompanied by drums and guitar.

**November 17, 2019
Birch Pereira and The Gin Joints**



From Americana to blues to jazz, soul and vintage rock 'n' roll - the versatile Seattle-based band offers a rangy dial's worth of songs for audiences who want to sock-hop in poodle skirts one minute, rock out to hot guitar licks the next, and later hug their honeys under the stars as a car stereo plays into the night.

**January 26, 2020
Terry Barber**



Terry Barber, Internationally acclaimed countertenor, is known for his extraordinary range both vocally and stylistically. Past member of the Grammy winning group, Chanticleer, Terry Barber has been a soloist for the best venues around the world, from the Metropolitan Opera and Carnegie Hall, to Moscow's Svetlanov Hall, and has been a soloist on recordings for every major record label with a variety of artists from Madonna to the London Philharmonic.

"...performances of great vitality and verve..."
— Los Angeles Times

**March 8, 2020
Backtrack**



Backtrack is an award-winning vocal ensemble based in New York City. These five musicians take the stage around the nation at performing arts centers, corporate events, music festivals, schools and more. They infuse heart and humor into every performance and cover genres from pop to Motown to classical, as well as perform original compositions. Their exciting arrangements transform familiar tunes and showcase the top-notch vocal (and beatboxing) abilities of all of the members.

**April 19, 2020
Vivace**



Vivace, a sophisticated and thrilling combination of four exceptional pop and classical singers, began merging their talents performing at the 2010 Winter Olympic Games. They have toured extensively throughout the U.S. and Canada, captivating audiences everywhere they go. Vivace's stirring combination of male and female voices creates a sound that is exclusively their own, setting them apart in the classical-crossover pantheon. With a rich and diverse repertoire ranging from pop songs, to opera arias, to their own self-written material, Vivace undoubtedly puts a fresh spin on both classical and contemporary music.



**Redmond Community
Concert Association**

Presenting quality live entertainment to
Central Oregon audiences.

Scan below or visit redmondcca.org for
a video preview and a direct link
to each of these artists.



*This project received support from IMTour, Oregon Arts Commission, and the National Endowment for the Arts.

